

Suburban Bethlehem

Lutheran Church & School



6318 W. California Rd
Ft. Wayne, IN 46818

Church: (260) 484-7873

Web page:
www.deeplyrootedtogrow.org

School: (260) 483-9371

April 2025

Volume 25 Issue 4

Inside this edition	
Letter from Pastor Bill <i>Senior Pastor</i>	1
Official Acts	4
Bible Studies	4
SBLS	6
Birthdays & More	13
Calendar	15

**“Forever
Faithful”
Psalm 145:13**



“What is more, I consider everything a loss compared to the surpassing greatness of knowing Christ Jesus my Lord, for whose sake I have lost all things. I consider them rubbish, that I may gain Christ and be found in Him, not having a righteousness of my own that comes from the law, but that which is through faith in Christ – the righteousness that comes from God and is by faith.”
(Philippians 3:8-9)

Dear Fellow Redeemed:

As we turn into April we come to the month that brings us Holy Week and Easter. The passage above is part of the Epistle Reading for the Fifth Sunday in Lent (April 6). It is a passage that is on my heart as we draw closer to Holy Week and Easter. Let me share some connection points between this passage and what we will experience this month.

“Everything is a loss...I consider them rubbish”

Coming to the cross of Jesus Christ forces us to ask the question, “why did this happen?” Why was it that Jesus had to die upon the cross? What does it mean for me? It first of all means that everything in my life that once had value I now see for what it really is: a loss, compared to knowing Jesus. My education, my profession (and I love them both) – even though my profession is all about Jesus, His cross and resurrection – for my own personal benefit, my profession is a loss compared to Jesus.

There is nothing, there is no one in our lives of greater value than Jesus and His cross and resurrection. Period. The Apostle Paul doubles down on this when he says “I consider them rubbish.” He considers all the things that once made him proud (his ethnicity, his former religious zeal, his ancestry, etc.) he now considers as “rubbish.” The term “rubbish” here is a polite term. A more graphic, in your face, translation would be “the stuff you find in the pit under an outhouse.” Anything and everything in our life that is not Jesus is such “rubbish!”

“that I may gain Christ and be found in Him”

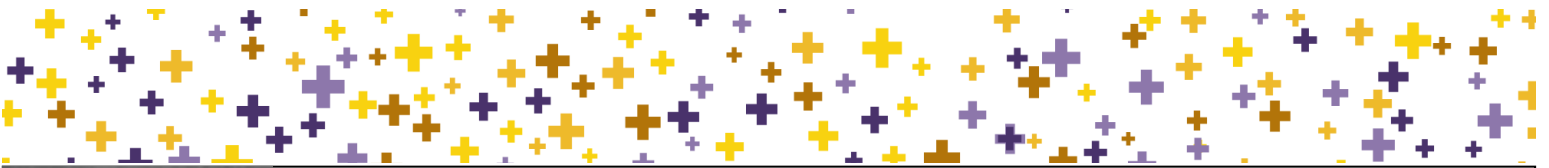
Since Jesus has such a high value in our life, does it surprise us that we would have an urge to be found in Him? He is what holds true value in our life. I invite you to consider this as we journey through Holy Week. When we are waving our palm branches high on Palm Sunday, remember that Jesus is our ultimate person of value. When we are hearing again about His body and blood being given through bread and wine on Maundy Thursday, rejoice – greatly rejoice, I’d say! – in the fact you are “found in Him” as you participate in Holy Communion. When we are holding the cross at one of the Good Friday services, remember that His death is the death of your sin. When we are sitting in a quiet church on Easter Eve, reflect on the fact you are no longer found in your sin but found *in Christ!* When we gather at the grave of a loved one at the beginning of the Easter Sunrise service, rejoice that being *in Christ* means we also *have Christ and His resurrection!*

Having the righteousness “which is through faith in Christ – the righteousness that comes from God and is by faith.”

We are not saved because of our works, our education, our profession, or our good looks. We are saved by Jesus. Believing in Jesus brings us a far better righteousness that we could have earned through the law...it brings us *Jesus' very own Righteousness!* For me, this is a deeply moving, personal passage. This passage was on my heart as the doctors were preparing to open a plugged artery in my heart. Education is very important (that's one of the reasons we have a school, right?). Your profession is important. Being the best parent, spouse, friend, etc. is important. But *nothing* is more important than being found in Christ! Nothing. That's why we celebrate Easter!

God's richest blessings in Jesus!

--Pastor Bill Mueller (Acts 16:31)



For most of my life I've carried a pocketknife. Almost every day I use it for something. That use, of course, makes it dull, blunt, and dangerous. Instead of cutting properly, it tears and shoves, leaving a harsh, rough cut. And to make it cut, you need more force. These traits make it likely to jump and cut you instead.

A dull blade is rounded. It has extra material that keeps it from coming to a good, fine, useful edge. The blade needs to be sharpened, to have the extra material scraped away at a proper angle, so that it can easily make distinct cuts. When it's sharp, a blade works properly and safely (so long as it's handled well, of course).

Solomon tells us in Proverbs 27:17 “As iron sharpens iron, So a man sharpens the countenance of his friend.”

We need to be sharpened too. As we go through our days, we accumulate extra material: false ideas, anger and bitterness, consciences that harden us against our pet sins. These make us dangerous to ourselves. These dull our consciences and our minds so that we can't clearly discern between God's truth and the lies of the devil, the world, and our sinful flesh. When we can't tell the difference, we're prone to follow the harmful lies, which might seem good to us, but they leave harsh, rough cuts on our soul. We hurt ourselves when we can't distinguish truth from error.

This is why God sends faithful friends: to sharpen us with God's Word. In good Christian conversation, based on God's Word, we sharpen and strengthen each other. We help each other see the world clearly and keep each other safe from the lies that would pull us away from God. We use the Scriptures to discuss ideas, situations, and our lives. We use Scripture to sharpen each other, so that through repentance and the forgiveness of sins God removes the excess material so that we can clearly see ourselves, the world, and God's Word.

This is a continual, lifelong, work. The world will always dull us; but God never tires of sharpening us and good conversation with good Christian friends, based on God's good Word, will continue to sharpen us into instruments of His peace.

Vicar Adam Nieting

SUNDAY SCHOOL

Pre-K through 5th grade will meet in the Youth Room.

6-8th graders Apologetics Study with Mrs. Holman in room 205.

9:15-10:15am Every Sunday!



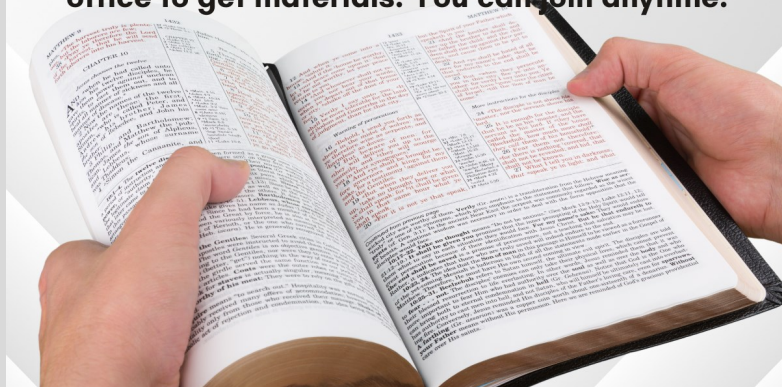
SBL

LIFELIGHT BIBLE STUDY

WEDNESDAYS | 1 PM OR 6 PM
• Meet in the Fellowship Hall

Revelation Resumes with session 4 on April 23

If you would like to join call Lilly in the church office to get materials! You can join anytime!



Sunday Morning Bible Study

FACILITATED BY
DEACONESS
MICHELLE
SUNDAYS
9:30-10:15AM
UPPER ROOM

JOY IN THE Journey

Bible Study: Luke – Eyewitness

Sundays at 9:30 in the Fellowship Hall

The Gospel according to St. Luke tells us many details about the earthly life of Jesus. In his introduction to the Gospel that bears his name, Dr. Luke infers he interviewed many people before he wrote this Gospel, including eyewitnesses. What if those eyewitnesses had participated in an interview about what they saw? “Luke – Eyewitness” is a set of narrations based on such interviews. Each week the study will include a video and then discussion based on the video and a section of Luke’s Gospel. Come to the Fellowship Hall Sunday mornings at 9:30 am. Facilitated by Pastor Bill Mueller.



LUKE SERIES

EYEWITNESS BIBLE SERIES

Sunday Bible Studies

Sunday Morning Bible Study “*Luke - Eyewitness*”, at 9:30 am in the Fellowship Hall. The Gospel according to St. Luke tells us many details about the earthly life of Jesus. In his introduction to the Gospel that bears his name, Dr. Luke infers he interviewed many people before he wrote this Gospel, including eyewitnesses. What if those eyewitnesses had participated in an interview about what they saw? “*Luke - Eyewitness*” is a set of narrations based on such interviews. Facilitated by Pastor Bill Mueller.

Sunday Morning Bible Study “*Joy in the Journey*”, at 9:30 am in the Upper Room. Join us as Deaconess Michelle leads this Bible study on Joy through April 13.

Sunday School - 9:15-10:15 am Pre-K through 5th meet in the Youth Room. 6-8th meet in room 205 with Mrs. Holman for a study on Apologetics.

Sunday Confirmation Classes 9:30 am in Mr. Dahnke’s classroom # 207

A Different Kind of Men’s Bible Study with *33 The Series* will be coming, look to your announcements for more information.

Weekday Bible Studies

Men’s Saturday Morning Bible Study (8:00 am – Fellowship Hall) We are a small group that enjoys fellowship and the study of God’s Word for an hour every Saturday morning. If you have any questions, please call Dan Schwarz 609-8319.

Monday Night Women’s Bible Study Mondays at 4:00 pm! Join us as we begin a Lenten devotion. Contact Tina Harmeyer 310-0367 with any questions.

LifeLight Bible Study will resume the book of Revelation (session 4) on Wednesday, April 23 at 1 pm or 6 pm in the Fellowship Hall. Contact the church office to order your study. Join us anytime!

God’s Girls Bible Study Wednesday’s God’s Girls will meet on Wednesdays, through April 16 bring your lunch 12noon to 1:30pm with No meeting on April 2 due to Spring break. The book we will be studying will be Vantage Point: a New View of Rest, Rhythm, and the Work of God by Brenda Jank. Questions text 413.8157 Diana Taylor.

Friday Morning Women’s Bible Study meets via ZOOM at 9 am. Join us as we start “*Walking with God in the Desert*” *Experiencing Living Water when Life is Tough* by Ray Vander Laan. Contact Patty Willyard at 247-0788 with questions.



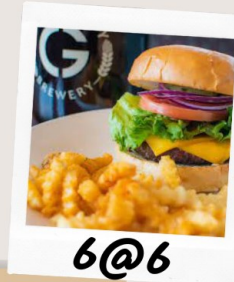
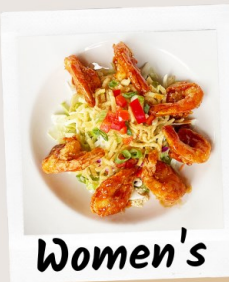
Membership as of February 28, 2025

Active Baptized: 911
Active Communicant: 672
Average Attendance: 402
Non-Participating: 47 (39 Communicant)

Baptisms:

- Juniper Elizabeth Scherer
February 23, 2025

Join us on May 6
as 6@6 pm
Returns



Contact
Vera Springer
385-4017
or Marilyn Link
402-4283
(call or text)
with any
questions

More information to follow
in your announcements

Sunday Confirmation Class

Meet at 9:30 am in Mr. Dahnke’s classroom # 207.

Lenten Worship

Wednesday Services at
1:45 PM & 7:00 PM

MEALS WILL BE SERVED FROM 6:00-6:45PM

April 2nd

"PILATE WHO DIDN'T CARE ABOUT JUSTICE"

ELDERS - TBD

April 9th

"THE THIEF WHO DIDN'T REPENT"

TRUSTEES - PULLED PORK AND POTATO SALAD

Holy Week

Palm Sunday April 13th (12th at 5pm)

8:00AM TRADITIONAL & 10:30AM CONTEMPORARY

Mourning Thursday April 17th

1:45PM & 7:00 PM

Good Friday April 18th

NOON & 7:00PM TENEBRAE

Easter Vigil April 19th

5:00PM SERVICE (PRIVATE PRAYER VIGIL FROM 3-5PM)

Easter Sunday April 20th

6:53AM BEGINS IN CEMETERY, 8:30 & 10:30AM

EASTER BRUNCH WILL BE

SERVED FROM 8-10:45AM

EASTER EGG HUNT 10-10:30AM



SBLS News

Home of the Suburban Bethlehem Bulldogs! Sharing God's blessings with the next generation!



Principal
Amy Greener

email address
greener.sbls@gmail.com
260-483-9371

As we journey through this Lenten season, I want to take a moment to express my heartfelt gratitude for your partnership, care, and unwavering support. I am deeply thankful for each prayer offered on behalf of our school and our community.

Your continued seeking of God's guidance and your prayers for our students, staff, and families are a source of strength and encouragement. In this sacred season of reflection and renewal, we are reminded of the greatest victory we have in Christ—the victory over sin and death that fills our hearts with joy, hope, and purpose. It is that joy that we are so blessed to share with each family, each student, and each person in our church family. I am truly grateful for your steadfast love and commitment to walking alongside us in faith. Together, we are witnessing God's grace unfold in our school and in the lives of those we serve. Thank you for being a vital part of this ministry, for your prayers, and for your partnership in Christ. May we continue to grow in His love and faithfulness as we move forward together in this season of Lent and beyond.

We have begun the testing season. Our students did a fabulous job on the Iread and now our 3-8 graders will soon be taking the ILearn state tests. Please keep them in your prayers as this can be a high stress time for them. Our wrestling team is hard at work and are coming away with lots of individual wins. Thank you, Coach Perl for all your work with the boys. Girls soccer is also beginning. We wish them good luck as they prepare for their season. Our 5th grade enjoyed time at Biztown with Junior Achievement and our 2nd grade spent time at Sweetwater. We held our annual Spelling Bee, won by fifth grader Aung Paing, and our annual Bullstar game splitting our varsity teams into new teams to play against one another for a night of fun.

God's Blessings,
Mrs. Greener, Principal







6th-8th Graders are invited on April 14 & 28 for youth group including Bible Study, snacks and games.

Text @jcrewyo to 81010 to join Remind for event updates and news!

Questions? Email Deaconess Michelle mschultz@sblschool.com

Join us on Confirmation Sunday

M
a
y
4
@ 10:30 am

A large white cross is centered on the right side of the poster. To its right is a white dove with its wings spread, flying upwards.

TIME FOR SOME

Beer and Hymns

Two yellow beer mugs with white foam are positioned on either side of the word "and" in the "Beer and Hymns" text.

JOIN US FOR A CASUAL EVENING OF FUN AND FELLOWSHIP

APRIL 25 | 6:30-8:30 PM
GREENER'S BARN - 7006 FELGER RD

BRING SNACKS TO SHARE!
BEER, WATER & LEMONADE
WILL BE PROVIDED

ALL AGES ARE WELCOME

CONCORDIA THEOLOGICAL SEMINARY FORT WAYNE PRESENTS THE 2025 PLACEMENT SERVICES

Vicarage & Deaconess Assignments will be Monday, April 28 @ 7 pm

Stephen Lane

Graduating Pastoral Ministry Students Placement will be Tuesday, April 29 @ 7 pm

Attend in person or watch online at [CTSFW.edu/callday](https://www.ctsfw.edu/callday)

Several blue graduation caps (mortarboards) are scattered around the text, some with tassels.



Easter

CAROLING

Share the joy of Easter by singing some of those treasured Easter Hymns with our shut-ins. This is not just for choir members. Voices of all kinds and ages and will be a blessing. Meet in church Fellowship Hall at 2:00pm.

from **2PM** to **4PM**

Palm Sunday
April 13th

HEARTS OF MERCY & COMPASSION (HMC) CROSSES FOR LOSSES/MINISTRY TEAM OPPORTUNITY:

We are establishing HMC/Crosses for Losses as an ongoing ministry of Suburban Bethlehem. We are working to finalize a "Ministry Team." The two basic roles needed are "builders" and "deliverers" of the crosses: builders construct and paint crosses, deliverers take crosses to areas where people are experiencing tragic loss to offer comfort. Also, we are still looking for a possible construction site. If you are interested in possibly serving contact Pastor Alex alexduff58@gmail.com, 260-484-7873. Also to find out about LCC and the HMC/Crosses for Losses ministry, visit their website www.LutheranChurchCharites.org.



Help make/build the crosses

Help by responding to situations in our area

CANDY DONATIONS & EASTER EGG HUNT

WE NEED SMALL, WRAPPED CANDY TO PLACE IN THE EGGS FOR OUR EASTER EGG HUNT. PLACE CANDY IN THE BOX AT THE WELCOME CENTER. DONATIONS NEEDED BY SUNDAY, APRIL 13.

THE EASTER EGG HUNT WILL BE ON EASTER SUNDAY, APRIL 20 FROM 10:00AM-10:30 AM FOR CHILDREN THROUGH 5TH GRADE!



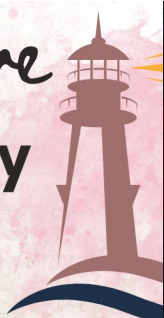
EASTER BRUNCH

SUNDAY APRIL 20, 2025
8 AM-10:45 AM

FREE WILL DONATIONS WILL BE COLLECTED FOR YOUTH ATTENDING THE NATIONAL YOUTH GATHERING TRIP



Footprints of Love Lighthouse Ministry Dinner



Lighthouse Ministry provides help for men with addictions. On **Friday, April 4th**, we will provide a dinner at 8:00 pm at Lighthouse Ministry for approximately 70 people. We will need a group of people to prepare and serve the meal! Another way to help is by providing donations to be used toward April 4th's dinner. Contact Pastor Alex with any questions and sign up at the Welcome Center.



Prayer Partner Kindergarten Lemonade

❖
Wednesday, May 14
1:00-1:45 PM
❖
in the Fellowship Hall



Mother-Son



LET'S GET MOMS AND SONS TOGETHER FOR A FUN GAME NIGHT.
APRIL 12TH FROM 6:30-8:30PM.
WE WILL HAVE SNACKS, DESSERTS, AND REFRESHMENTS.
\$12.00

Senior Group

Thursday, April 24

Join us at noon in the Fellowship Hall for a potluck lunch and a presentation from Worship Anew. Please bring a friend and a dish to share. We hope to see you there!

LUNCH
time

Little Disciples Summer Day Camp



2025 SUMMER DAY CAMP APPLICATIONS FOR AGES 5-12 AVAILABLE NOW ON THE CHURCH WEBSITE!

**QUESTIONS? EMAIL
CAMP@SBL SCHOOL.COM
CALL OR TEXT 260-999-3420**

**CAMP RUNS FROM
JUNE 9TH-AUG. 1ST
7:15AM-5:15PM**

HOW SCRIP CAN WORK FOR YOU!

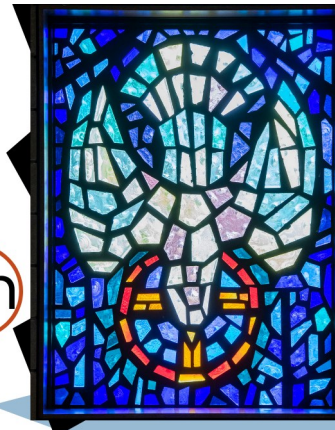
The scrip program is a great way to earn money for our school, our church, and also your family. Families earn money by purchasing gift cards at face value and earning a rebate at the end of the year. 70% of the rebate goes back to each individual family, 10% goes to the church, 10% goes to the school, and the remaining 10% stays in the scrip program to help pay for shipping costs. Physical and E-gift cards are available.

FOR EXAMPLE IF YOUR FAMILY SPENDS THE FOLLOWING:

\$100/WEEK MEIJER (GROCERIES) 3% REBATE =\$3	\$156.00/YEAR FAMILY SHARE \$109.20
\$100/WEEK SPEEDWAY (GAS) 4% REBATE =\$4	\$208.00/YEAR FAMILY SHARE \$145.60
\$200 MENARDS (HOME IMPROVEMENT) 3% REBATE =\$6	\$6.00/YEAR FAMILY SHARE \$4.20
\$250 KOHLS (BACK TO SCHOOL) 4% REBATE =\$10	\$10.00/YEAR FAMILY SHARE \$7.00
\$500 AMAZON (CHRISTMAS) 1.7% REBATE =\$8.50	\$8.50/YEAR FAMILY SHARE \$5.95
\$10/WEEK STARBUCKS 4.5% REBATE =\$4.5	\$23.40/YEAR FAMILY SHARE \$16.38
\$30/MONTH PIZZA HUT 8% REBATE =\$2.40	\$28.80/YEAR FAMILY SHARE \$20.16
TOTAL SCRIP REBATE FOR THE YEAR	\$440.70/YEAR FAMILY SHARE \$308.49

In one year, a family could earn \$44.07 for the church, \$44.07 for the school, and \$308.49 for themselves! Some of our SBL families last year earned rebates of \$30 and up to \$650. To get started or for more information, please contact Carrie Johnson at 260-760-7358 or email at sblscrip@gmail.com

Saturday
Worship
Service
Ends 5 pm
May 17



Monday Worship
Service Begins
May 26 at 7 pm



LIFE DEFENDERS

Learn how to make the Case for Life!
Life Defenders workshops equip attendees to become effective ambassadors for life.

Right to Life Workshop @ Suburban Bethlehem Lutheran Church

How do you defend the value of life in a culture that increasingly says, "Not all humans are equal?"

Join Right to Life of Northeast Indiana on Saturday, April 26th, from 9 am to 12 pm at SBL for a Pro-Life Apologetics workshop. Visit: ichooselife.org/fortwayneWS

Saturday, April 26
from 9 am - Noon
Suburban Bethlehem Lutheran
www.ichooselife.org/fortwayneWS
(260) 471-1849

CHRIST CENTERED

CARE, COMFORT, & HOPE

2025 *LOOK up* CONFERENCE
FAITH & MENTAL HEALTH

CHRIST CENTERED

CARE, COMFORT, & HOPE
LOOK up CONFERENCE
FAITH & MENTAL HEALTH

Tuesday, May 6, 2025
Allen County War Memorial Coliseum
Fort Wayne, IN
8:30 am to 4:30 pm

REGISTRATION STARTS
JANUARY 6, 2025
\$35 PER TICKET

MORNING KEYNOTE
Dr. Beverly Yahnke
Executive Director of Christian Counsel, Daxology
Mental Health and the Church

AFTERNOON KEYNOTE
Laura Howe
Founder of Hope Made Strong
Christ, Community, Connection, and Hope

Save the Date for the 2025 LookUp Conference!

Join us for presentations, conversations, and breakout sessions with church leaders and experts who are working to integrate faith and mental health in the Lutheran and broader faith community. This one-day event will give pastors, church workers, and laypeople practical ideas in providing care, comfort, and support for people in their congregation and ministry settings. You'll leave feeling inspired, energized, and ready to make an impact!

THE Lutheran Foundation

registration opens January 6th
www.lookupconference.com

on the HORIZON

APRIL	
Lenten Worship Services 1:45 pm & 7 pm	2 & 9
Lenten Suppers 6:00 pm - 6:45 pm	2 & 9
Mother & Son Game Night Event	12
Palm Sunday	13
Maundy Thursday 1:45 & 7 pm	17
Good Friday 12 pm & 7 pm	18
Easter Vigil 5 pm	19
Easter Sunday 6:53 am, 8:30 & 10:30 am	20
Easter Egg Hunt 10 am - 10:30 am	20
Easter Brunch 8 am - 10:30 am	20
School & Church Office Closed	21
Beer and Hymns 6:30 pm -8:30 pm	25
Life Defenders @ SBL	26
Youth Group Easter Party	27
Elders' Confirmation Examination	27

MAY	
Confirmation Sunday @ 10:30 am Service	4
Muffins with Moms	9
Kindergarten Prayer Partner Lemonade Social	14
Last Saturday Service	17
End of School Youth Party	18
Memorial Day	26
Monday Services Begin!	26
SBLS Spring Sports Awards	28
SBLS 8th Grade Graduation	30
SBLS Last Day of School	30



1 Barnabas Boedecker	16 Megan Reid
1 Jeremiah Frederick	16 JP Stahl
1 Heidi Reichard	16 Mark Thomas
1 Jayce Richards	17 Lenore Bohnke
2 James DeFrain	17 Ken Knepple
2 Micah Johnson	17 Mallory McKinley
2 Barb Knepple	18 Elijah DeRose
2 Kyle Kruse	18 Doug Dittmer
2 Joe Rennecker	18 Keaton Gass
2 Willow Rentschler	18 Laura Helmkamp
3 Joyce Koontz	18 Natalie Linnemeier
3 Josie Sauer	18 Emerson Rohrbaugh
3 Kenny Snyder	18 Maddie Schroeder
4 Collin Johnson	19 Mataya Arnold
4 Barb Rentschler	19 Mitch Schaefer
4 Tammy Trauner	19 Johnathon Schnelker
5 Dolores Aman	20 Rachel Dillman
5 Taylor Welker	20 Elisabeth Patrick
6 Ronald Partridge II	20 Landon Mueller
6 Bryan Yoder	21 Hannah Holman
7 Audrey Greener	23 Sheri Harmeyer
8 Amy Schwarz	24 Kim Moore
9 Keersten Nichols	24 Becky Wysong
9 Tina Zelt	25 Cameron Hille
10 Zach Hobbs	26 Emma Ross
10 Julie Mueller	26 Leroy Schaefer
11 Aloria Collins	27 Carson Mueller
12 Scott Guerrero	27 Steven Pipenger
12 Elaine Kincaid	27 Beatrix Schaefer
12 Emersyn Perry	27 Lucy Stahl
14 Cheryl Archer	28 Matt Hicks
14 Chris Loeffler	28 Landon Urban
14 Carol Stahlhut	28 Josh Walworth
15 Isabella Jomo	29 Magnum Bobay
15 Bill Toth	29 Madelynn Furniss
16 Mike Harmeyer	29 Kendyl Manns
	30 Lori Schwarz



SAVE THE DATE

Sign Up for Altar Flowers!
April 20 & 27 are available for sponsorship.



Christ caring for people through people

STEPHEN MINISTRY

Two disciples were walking on Easter day to Emmaus, a village seven miles from Jerusalem. They knew of Jesus' death but not of His resurrection. They were despondent and had lost all hope. But when the risen Jesus joined them and revealed Himself to them hope was restored.

In today's busy and hectic world walking has become popular, whether walking at the mall or outside in the fresh air. Some walk with friends and chat while others walk alone to clear their minds. Some prefer short walks and others take long ones. Jesus walk through the streets to Calvary had to seem like a long walk. Do we walk with the Lord each day? It's a perfect time for prayer and meditation. Isaiah 2:5 says..."Let us walk in the light of the Lord." In Micah 6:8 we read..."And what does the Lord require of you? To act justly and to love mercy and to walk humbly with your God."

Are there times in your life when things aren't going well? Maybe your life is in disarray? We have Stephen Ministers here at Suburban Bethlehem who would be willing to walk along beside you in your struggles for how ever long a Stephen Minister is needed. God's word and prayer will be shared.

To learn more about Stephen Ministry or to request a Stephen Minister, contact Pastor Bill 484.7873 or www.deeplyrootedtogrow.org.

Let us ever walk with Jesus, follow His example pure,
Through a world that would deceive us and to sin our
spirits lure. Onward in His footsteps treading, Pilgrims
here, our home above, Full of faith and hope and love, Let
us do the Father's bidding. Faithful Lord, with me abide,
I shall follow where you guide.
Lutheran Service Book # 685 v 1

Muffins with Moms
Friday, May 9th, 2025
7:00 am to 7:45 am

Enter through main church entrance.
We will have gluten-free options available.



April 6, 2025

"A New Covenant"

Sermon Text:
Luke 20:9-20
Rev. Paul Shoemaker
Jesus tells the parable
of the wicked vine-
dressers to illustrate
the unfaithfulness of

the children of Israel to the covenant God so graciously made with them. A new Israel, the Christian Church, will emerge as a new covenant is set in place.

April 13, 2025 "Palms to Passion"

Sermon Text: John 12:13b Rev. Shayne Jonker
Holy Week begins on the road to Jerusalem. The King makes His grand entrance into Jerusalem, riding atop a borrowed donkey, as the people greet their Messiah: "Blessed is He who comes in the name of the Lord!" The mood, however, shifts quickly from palms to passion, from triumph to crucifixion. This King, this Messiah, came to lay His life down, to die for His people on the cross.

April 18 (Good Friday) "What Does This Mean?"

Sermon Text: John 19:17-30 Rev. Craig Muehler
It is fitting that we take a look at the words of Jesus to the world as He hangs upon the cross in suffering and pain. We ask the question, "What does this mean ... for us ... for the world?"

April 20, 2025 "Christ is Risen"

Sermon Text: 1 Cor. 15:20 Rev. Dr. Thomas Eggold
The empty tomb means that our bodies will rise from the grave! The empty tomb means that we will be reunited with loved ones who have died in the faith. The empty tomb means that we will live forever with God in holiness, innocence, and blessedness. The Resurrection of Jesus Christ has changed everything!

April 27, 2025 "I Believe..."

Sermon Text: John 20:28 Rev. Scott Zecker
We confess in the Apostle's Creed that Jesus, on the third day, rose again from the dead, and we believe in the resurrection of the body. Why is it important we believe in the resurrection? Hear why the resurrection of Jesus changes everything for you.

Learn more and view programs at WorshipAnew.org

Mission Statement

Sharing Christ's love through ministry and media.

Worship Anew Viewing Schedule

Sundays

7:00 a.m. NBC 21.2, FiOS4, Comcast 13, Mediacom 8

8:00 a.m. MyTV 21.3, FiOS 9, Comcast 252

11:30 am DIRECTV 377 & WINM 12/38

4:00 p.m. Comcast 55 & FiOS 25

Mondays 10:00 a.m. Comcast 55 & FiOS 25

Lutheran Ministries Media, Inc.

5 Martin Luther Drive Ft. Wayne, IN 46825

(260) 471-5683 or toll-free (888)286-8002

April 2025

Sun	Mon	Tue	Wed	Thu	Fri	Sat
		1 Growing Disciples Class 6:00 pm	2 Lenten Worship/ Chapel Service 1:45 pm Lenten Meal 6:00-6:45 pm Lenten Worship Service 7:00 pm Open Basketball 7:30 pm	3 Healthy Lives Healthy Minds Meeting 9:45 am	4 Women's Bible Study meets by Zoom 9:00 am	5 Men's Bible Study 8 am Saturday Worship 5 pm
6 Worship 8:00 am & 10:30 am Education Hour: Bible Study 9:30am Sunday School 9:15am Confirmation Class 9:30 am	7 Women's Bible Study 4:00 pm Handbells 6:00 pm NYG Meeting 6:30 pm	8 Growing Disciples Class 6:00 pm Board of Elders 7:00 pm	9 Lenten Worship/ Chapel Service 1:45 pm Lenten Meal 6:00-6:45 pm Lenten Worship Service 7:00 pm Open Basketball 7:30 pm	10 School Board 6:30 pm	11 Women's Bible Study meets by Zoom 9:00 am	12 Men's Bible Study 8 am Saturday Worship 5 pm Mother & Son Game Night 6:30 pm
13 Worship 8:00 am & 10:30 am Palm Sunday Education Hour: Bible Study 9:30am Sunday School 9:15am Confirmation Class 9:30 am	14 JCrew Mad Monday 3:00-4:00 pm Women's Bible Study 4:00 pm Handbells 6:00 pm	15 Growing Disciples Class 6:00 pm	16	17 Maundy Thursday Service w/ Communion 1:45 pm Maundy Thursday Service w/ Communion 7:00 pm Maundy Thursday	18 Women's Bible Study meets by Zoom 9:00 am Good Friday Service 12:00 pm Good Friday Tenebrae Service 7:00 pm Good Friday	19 Men's Bible Study 8 am Easter Prayer Vigil 3:00 pm - 5:00 pm Easter Vigil Service w/ Communion 5:00 pm Easter Vigil
20 Easter Sunrise Festive Worship w/ Communion 6:53 am Easter Festive Worship w/ Communion 8:00 am Easter Breakfast 8:00 am - 10:45 am Easter Egg Hunt 10 am - 10:30 am Easter Festive Worship w/ Communion 10:30 am Easter Sunday	21 Monday after Easter Church Office Closed Women's Bible Study 4:00 pm Stephen Ministry 5:30 pm Handbells 6:00 pm	22 Growing Disciples Class 6:00 pm Outreach Board 6:30 pm	23 Chapel 1:45 pm LifeLight Bible Study 1:00 pm & 6:00 pm	24 Seniors presentation with potluck 12:00 pm Church Council Meeting 6:30 pm	25 Women's Bible Study meets by Zoom 9:00 Beer & Hymns 6:30-8:30 pm @ Greener's Barn	26 Men's Bible Study 8 am Life Defenders Workshop 9:00 am - 12:00 pm Saturday Worship 5 pm
27 Worship 8:00 am & 10:30 am Worship Anew Sunday Education Hour: Bible Study 9:30am Sunday School 9:15am Confirmation Class 9:30 am Youth Group Easter Party 3:00 pm Elders' Confirmation Examination 3 pm	28 JCrew Mad Monday 3:00-4:00 pm Women's Bible Study 4:00 pm Handbells 6:00 pm CTSFV Vicarage & Deaconess Placement Service 7 pm	29 Growing Disciples Class 6:00 pm CTSFV Pastoral Ministry Placement Service 7 pm	30 Chapel 1:45 pm LifeLight Bible Study 1:00 pm & 6:00 pm			



Suburban Bethlehem

Lutheran Church & School
Deeply rooted to grow

6318 W. CALIFORNIA RD.
FORT WAYNE, IN 46818-9737

NON PROFIT ORG.
US POSTAGE PAID
FORT WAYNE, IN
PERMIT NO. 1917

ADDRESS SERVICE REQUESTED

V. 25 no. 4

"Forever Faithful." Psalm 145:13

The Suburban Bethlehem Star



Mission Statement
Suburban Bethlehem
Lutheran Church and
School disciples each
generation to grow deep-
ly, serve humbly and go
boldly in Christ to
advance God's Kingdom.

WORSHIP SCHEDULE

SUNDAY

8:00 am Traditional Worship Service
9:30 am Education Hour
10:30 am Contemporary Worship Service

SATURDAY

5:00 pm Saturday Worship Services
(Saturday Services through May 17)

MONDAY

7:00 pm Monday Worship Services
(Monday Services begin May 26)

ONLINE WORSHIP

**Visit the SBL YouTube Channel to find videos
and live-stream for worship services.**

Follow us on



Facebook

Church: web page: www.deeplyrootedtogrow.org e-mail: sbl@deeplyrootedtogrow.org
School: web page: www.suburbanbethlehem.org e-mail: greener.sbls@gmail.com

Church Office 484.7873 ~ School 483.9371

Amy Greener, Principal 402.8179

Stephen Lane, Seminary Student

Adam Nieting, Vicar ext. 1004

Alex Duff, Assistant Pastor 403.6496

Michelle Schultz, Deaconess ext. 1006

Lilly Lahey, Office Admin. ext. 1000

Bill Mueller, Senior Pastor 445.0549